

THE HOME GATEWAY INITIATIVE EXPLAINED

The Home Gateway Initiative (HGI) is an industry organization shaping the way that IP services are delivered to the home. It was founded in 2004 by major Broadband Service Providers (BSPs) and joined by leading vendors of digital home equipment.

HGI publishes requirements for digital home building blocks. Those building blocks are the hardware and software elements in the digital home that connect consumers and services, such as Home Gateways, Home Networks, Home Network devices. HGI projects are triggered by the services vision of our BSP members, and build on the technical collaboration of all HGI participants.

HGI works closely with other industry bodies in its to create a digital home architecture centred on the Home Gateway that integrates quality of service, software applications, energy efficiency, and efficient home networks.

HGI welcomes BSPs and vendors from across the globe - our members represent the entire spectrum of players in the broadband home arena.



WHY JOIN THE HGI?

As a Broadband Service Provider, being a member of HGI will help you reduce the time to market for the deployment of advanced services to the home. Jointly agreeing requirements for services, technical solutions, and test programmes for Home Gateways and home networks reduces the load on valuable Broadband Service Provider resources.

As a manufacturer or designer of residential gateways, broadband home equipment, chipsets or software, being a member of HGI provides you with an open dialogue with operators, and the opportunity to influence a common set of requirements, and the ability to pre-qualify your product against operator requirements in the HGI test programme.

HOW TO JOIN THE HGI

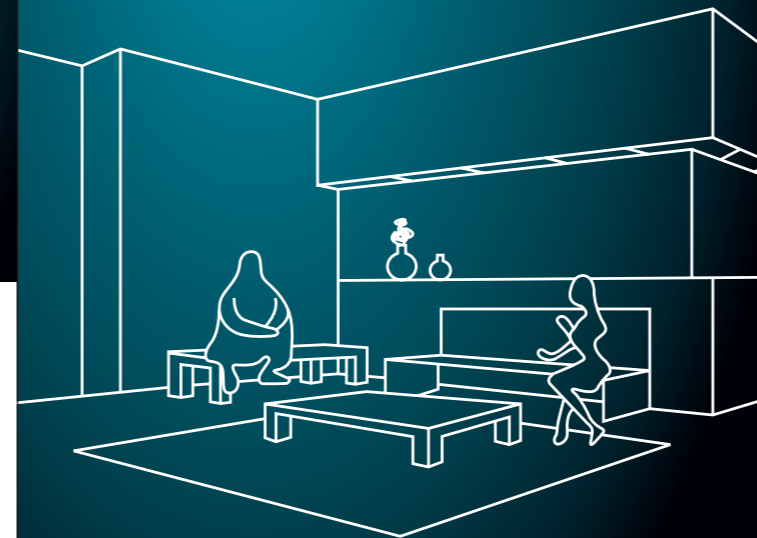
To join the HGI, please visit www.homegatewayinitiative.org or email the HGI Secretariat at contact@homegatewayinitiative.org



HGI Secretariat
contact@homegatewayinitiative.org
Tel: +33 492 944 971
Fax: +33 492 385 285
www.homegatewayinitiative.org



CONNECTING HOMES, ENABLING SERVICES



WHAT EXACTLY IS A HOME GATEWAY?

A Home Gateway (HG) provides broadband connectivity, Quality of Service, and software applications to the home.

It delivers services to, and from, an ever-increasing number of end devices in the customer environment.

PUBLISHED DOCUMENTS

HGI's documents follow a release plan with most of its current work in the Release 3 stream. The requirements from all HGI published documents are tested in the annual HGI Test Event. Some of the major published documents are described below.

Residential Profile

The cornerstone of HGI's work is the Residential Profile which details the functional requirements for the Home Gateway. It describes:

- WAN and LAN interfaces
- IP connectivity
- Routing and bridging
- Quality of service (QoS)
- Security
- Remote management
- Device and service support
- Support for Fixed Mobile Convergence scenarios

QoS White Paper

HGI's work on QoS in the home network sets out the requirements for service identification and treatment according to the real world issues. The white paper succinctly describes the methods and requirements adopted by HGI service providers.

Requirements for an Energy Efficient Home Gateway
HGI has led the industry in identifying the practical techniques to decrease energy utilisation of the HG. As an always-on interconnected device, controlling HG energy use in a smart way is the stepping stone to the reduction of ICT-related power consumption in the home.

Requirements for Multi-Session Support
This document describes the key tools and requirements for management by the Broadband Service Provider of transport layer sessions in the HG.

HG Requirements for Software Modularity
HGI has identified platform requirements to enable the extension of the HG as a software applications platform, and works with industry partners to identify requirements for an OSGi-based solution.

WORK IN PROGRESS

HGI is currently working on new topics to meet industry needs. These include:

- "Home Network Infrastructure Devices". The HGI, working with major technology vendors is setting system requirements on home networking devices.
- Extension of Energy Efficiency Requirements beyond the HG to Home Network and end devices
- Home Energy Management and Control Service
- Diagnostics capabilities that help Broadband Service Providers to more efficiently support their customers
- Understanding the impact of unmanaged services upon services and end-to-end network requirements
- Study of next-generation QoS techniques and requirements that respond to updated service models in the industry
- Incorporation of Next Generation Access technologies into the HGI home network requirements, including the Network Termination device

HOW DOES THE HGI OPERATE?

Management Committee

The Management Committee (MC), composed of representatives of HGI BSPs, consults with all the members of HGI to set the scope of new projects and to direct their progress through business and technical working.

Business Group

The Business Group (BG) is a unique incubator of ideas and next-generation services. Open to all HGI members, it provides insight to the vendors about service provider intentions and valued feedback to the BSPs.

Technical Working Group

The Technical Working Group (TWG), also open to all HGI members, is the main technical body of HGI. Starting from the BG's service requirements, the TWG sets out concrete functional requirements for devices and services.

Technical Task Forces

Operating under the guidance of the TWG, task forces take a "deep dive" into specific topics where a strong focus

is needed. Current task forces include Energy, Software Modularity, and Test.

Working Group Chair and Deputy Chair positions are open to all members and appointments are supervised by the MC.

Ratification Process

HGI published documents go through a ratification process prior to publication where all members companies have a ballot.

Quarterly Meetings

The HGI organises quarterly plenary meetings to advance our work. Meetings are held in Europe, Asia and North America on a rotating basis.

TEST EVENTS AND TEST LOGO PROGRAM



A major piece of our work is the annual HGI Test Event, first introduced with the highly successful 2009 testing program, and continued in 2010 and beyond.

HGI sets functional requirements on HGs, and the test event provides an opportunity to test the implementation of these requirements by the vendors.

HGI Broadband Service Providers form an auditing team to ensure the tested results are accurately reported.

Introduced in 2010, the HGI Test Logo program provides vendors with a graphical logo that embodies their participation in the test event and shows which functional areas of their device were tested and audited. HGI believes that the Test Event and Test Logo program will allow vendors and Service Providers to understand the capabilities of particular HGs and reference designs for HGs more thoroughly.

